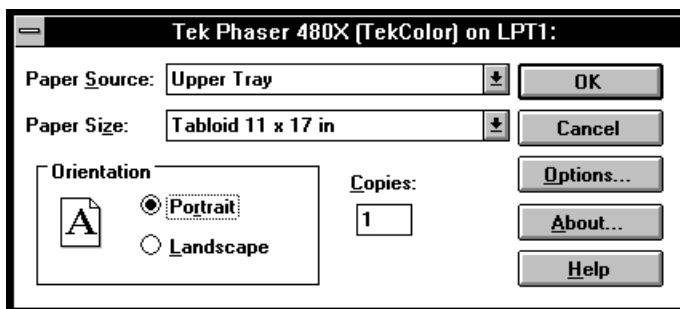


Using the driver's options

Use the following dialog boxes to select printing options.

Making selections in the Setup dialog box

To reach the **Printer Setup** dialog box without running an application, open the **Control Panel**, double-click on the **Printers** icon, then click **Setup**. Make printer selections in the fields described in the following table.

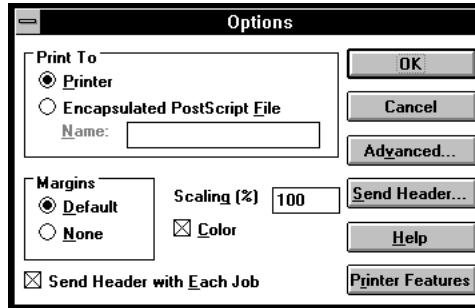


Setup dialog box options

Dialog box options	Option descriptions
Paper Source	Select one of the following options: <ul style="list-style-type: none">■ Upper Tray■ Manual Feed
Paper Size	Select a paper size from the pop-up menu.
Orientation	Select one of the following options to determine how an image is placed on the paper: <ul style="list-style-type: none">■ Portrait (vertical)■ Landscape (horizontal)
Copies	Type in the number of copies (prints) you want. (You may want to set the number of copies from your application because the number of copies in the Setup dialog box remains the same until you change it again.) If you are printing multiple copies, make sure the Transmission Retry is set for at least 600 seconds (10 minutes).

Making selections in the Options dialog box

From the **Setup** dialog box, click **Options** to see the **Options** dialog box. Refer to your Microsoft Windows documentation for details on the options in this dialog box. Make printer selections in the fields described in the following table.

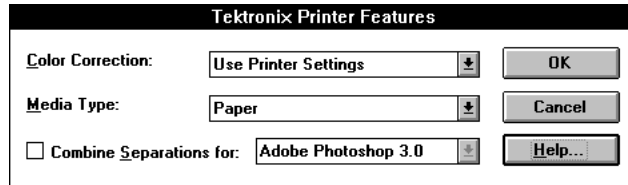


Options dialog box options

Dialog box options	Option descriptions
Print To	Select one of the following options: <ul style="list-style-type: none">■ Printer■ Encapsulated PostScript File (This option generates an EPS graphic that can be imported into other applications. This option does not create a printable file.)
Scaling	Type in a percentage value to scale the printed image.
Margins	Select one of the following options: <ul style="list-style-type: none">■ Default■ None
Color	Click the check box on to print in color.
Send Header with Each Job	This box must be checked on . (The Header contains important PostScript information that must accompany each print job; it is not a banner page printed with each job. If this box is not checked, an error message is displayed on your computer screen and your job does not print.)
Printer Features button	Click this button to see the Tektronix Printer Features dialog box.

Making selections in the Tektronix Printer Features dialog box

From the **Options** dialog box, click **Printer Features** to see the **Tektronix Printer Features** dialog box. Make printer selections in the fields described in the following table.



Tektronix Printer Features dialog box options

Dialog box options	Option descriptions
Color Correction	Select one of the following options: <ul style="list-style-type: none">■ None■ Vivid Color■ Simulate Display■ SWOP Press■ SNAP Press■ Euroscale Press■ Commercial Press■ Monochrome■ Use Printer Setting*■ Any user-modified color profiles created in the <i>PhaserMatch</i> application.
Media Type	Select one of the following options: <ul style="list-style-type: none">■ Paper*■ Transparency
Combine Separations for	This option is off by default. Click the check box to combine separations, then select the application you are using from the following list: <ul style="list-style-type: none">■ Adobe Photoshop 3.0■ Aldus PageMaker 5.0■ QuarkXPress 3.3

*These are the factory default settings.